

## WRRRA MEMBER COMPANIES

Bainbridge Disposal  
Basin Disposal, Inc.  
Basin Disposal of Walla Walla  
Basin Disposal of Yakima  
Cedar Grove Composting  
Cando Recycling & Disposal  
Consolidated Disposal Services  
Ed's Disposal, Inc.  
Excess Disposal Service  
Naslund Disposal Service  
Nooksack Valley Disposal  
Pullman Disposal Service  
Recology  
Republic Services  
Rubatino Refuse Removal  
San Juan Sanitation  
Sanitary Service Company  
Sound Disposal  
Stanley's Sanitary Service  
Sunshine Disposal & Recycling  
Upper/Okanogan Valley Disposal  
Waste Connections  
WM  
WasteWise Methow  
Zippy Disposal Service

## APPLICATION INFORMATION

Questions regarding the scholarship program should be addressed to:

The WRRRA Scholarship Program  
Scholarship Management Services  
One Scholarship Way, P.O. Box 297  
Saint Peter, MN 56082  
Telephone: (507) 931-0446  
Vicki Harder:  
[vharder@ScholarshipAmerica.org](mailto:vharder@ScholarshipAmerica.org)

For more information regarding the program or to obtain an application, please visit the Scholarship Program page on the WRRRA web site at:

[www.wrrra.org](http://www.wrrra.org)



WASHINGTON  
REFUSE &  
RECYCLING  
ASSOCIATION

## Scholarship Program

WRRRA Office



4160 6th Ave SE  
Suite 205  
Lacey, WA 98503  
P: (360) 943-8859  
[www.wrrra.org](http://www.wrrra.org)



WASHINGTON  
REFUSE &  
RECYCLING  
ASSOCIATION

## Scholarship Program

## 2024-2025 School Year



## 2020-2021 WRRRA Scholarship Program



WASHINGTON  
REFUSE &  
RECYCLING  
ASSOCIATION

Scholarship Program

### THE PROGRAM



The Washington Refuse & Recycling Association has established a scholarship program to assist Washington Member company employees and their dependent children who plan to continue education in college or vocational school programs.

This scholarship program is administered by Scholarship Management Services®, a division of Scholarship America®. Scholarship Management Services is the nation's largest designer and manager of scholarship and tuition reimbursement programs for corporations, foundations, associations and individuals. Awards are granted without regard to race, color, creed, religion, sexual orientation, gender, disability or national origin.



### ELIGIBILITY

Applicants to the Washington Refuse & Recycling Association Scholarship Program must be:

- Employees or dependent children\* of employees of WRRRA Member companies and their affiliated companies, as defined by the Washington Refuse & Recycling Association bylaws.
- Students already enrolled or planning to enroll in a full-time\*\* undergraduate course of study at an accredited two-year or four-year college, university or vocational-technical school. Employees may attend school part-time.

*\* Dependent children are defined as natural or legally adopted children or stepchildren under the age of 24, living in the employee's household or primarily supported by the employee. Employees are defined as individuals employed by WRRRA member companies, where the employee lives and works within Washington State.*

*\*\*Full-time study is defined as full-time enrollment for the entire upcoming academic year.*

**APPLICATION DEADLINE:**

**May 3, 2024**

### AWARDS

Three (3) awards of \$6,000 and one (1) award of \$5,000.

Up to four (4) awards will be granted for 2024-2025. Awards are not renewable, but students may reapply to the program each year they meet eligibility requirements.

### PAYMENT OF SCHOLARSHIPS

Scholarship Management Services processes scholarship payments on behalf of the Washington Refuse & Recycling Association. Payments are made on August 1st. A check will be mailed to each recipient's home address and is made payable to the school for the student.

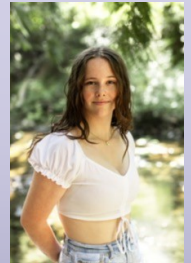
The Washington Refuse & Recycling Association reserves the right to the conditions and procedures of this scholarship program and to make changes at any time, including termination of the program.



### 2023-2024 SCHOLARSHIP RECIPIENTS



**Ashley Everstine**  
Oregon State University  
Sunshine Disposal & Recycling Inc.



**McKenna Finn**  
University of Arizona  
Sanitary Service Company, Inc.



**Charlotte Hartvigson**  
Colorado State University  
Global Campus  
Waste Connections Inc.



**Lena Yates**  
Western WA University  
Waste Management of WA, Inc.